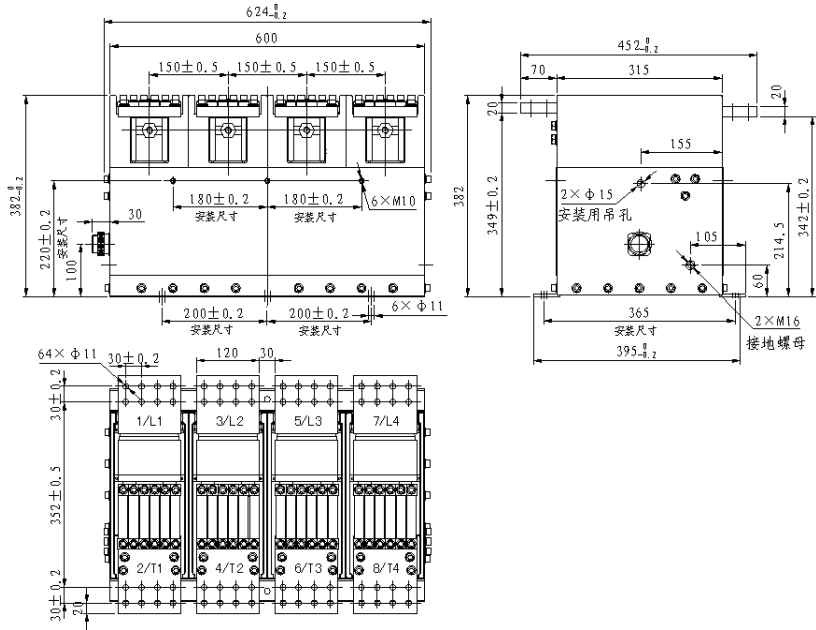


Product outline



CKJ11-3000 Vacuum Contactor

Technical parameters		
Rated voltage	kV	1.5(0.38)
Rated current	A	3000
Rated Turn-on capacity	A/50 Times	30000
Rated Disjunction capacity	A/50 Times	24000
High-point Disjunction capacity	A/3 Times	24000
Mechanical life	Times	1×10 ⁶
Electrical Life	Times	6×10 ⁴
Weight	Kg	170
Controlled power voltage	V(AC)	380
Pick up power	W(transient)	24000
Hold power	W	300
Auxiliary contact	3 pairs NO, 3 pairs NC	
Auxiliary contact capacity	Ue:AC380V Ie:10A	