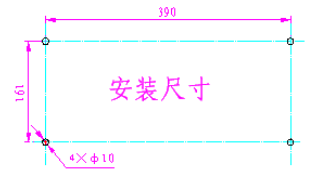
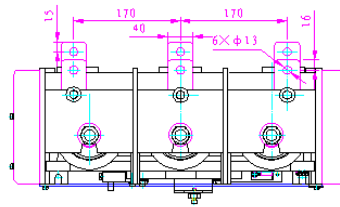
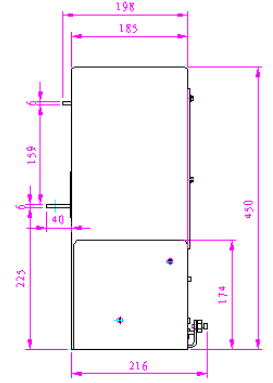
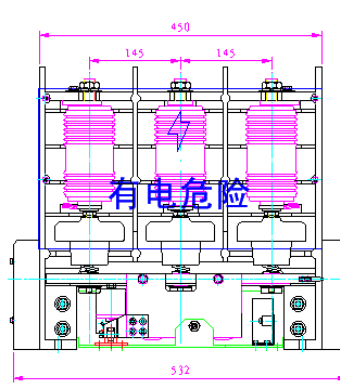


Outline Drawing



JCZ5-160A/12kV-S AC Vacuum Contactor

(Mechanical Latching)

| Technical Parameters | | |
|---|---------------|------------------------|
| Rated Voltage | kV | 12 |
| Rated Current | A | 160 |
| Rated Making Capacity | A/100 Times | 1600 |
| Rated Breaking Capacity | A/25 Times | 1280 |
| Limited Breaking Capacity | A/3 Times | 1600 |
| Rated short time withstand current (2S) | kA | 1600 |
| Rated peak withstand current | A | 4000 |
| Mechanical Life | Times | 5×10^5 |
| Electrical Life | Times | 1×10^5 |
| Weight | kg | 35 |
| Control Power Voltage | V (AC/DC) | 110、220 |
| Closing Power | W (transient) | 930 |
| Opening Power | W (transient) | 300 |
| Auxiliary Contact | | 3 pairs NO, 3 pairs NC |