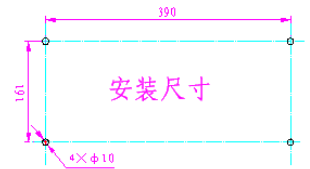
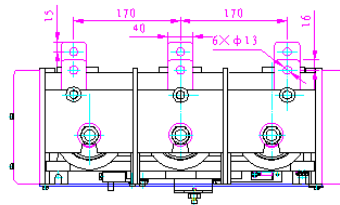
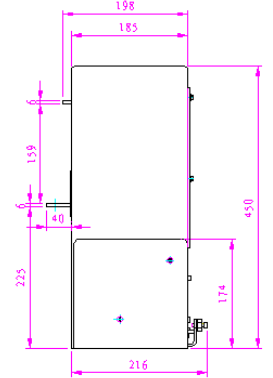
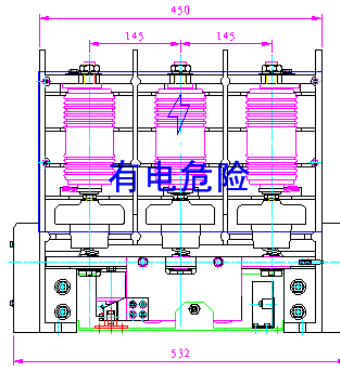
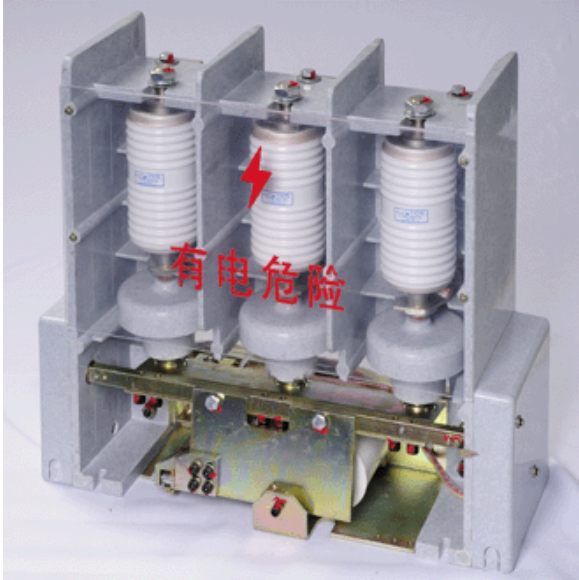


Outline Drawing



JCZ5-250A/12kV-S AC Vacuum Contactor

(Mechanical Latching)

Technical Parameters		
Rated Voltage	kV	12
Rated Current	A	250
Rated Making Capacity	A/100 Times	2500
Rated Breaking Capacity	A/25 Times	2000
Limited Breaking Capacity	A/3 Times	2500
Rated short time withstand current (2S)	kA	2500
Rated peak withstand current	A	6250
Mechanical Life	Times	5×10^5
Electrical Life	Times	1×10^5
Weight	kg	35
Control Power Voltage	V (AC/DC)	110、220
Closing Power	W (transient)	930
Opening Power	W (transient)	300
Auxiliary Contact		3 pairs NO, 3 pairs NC