



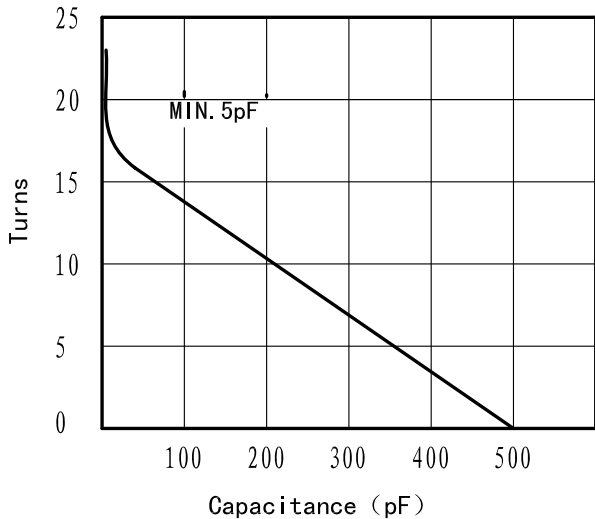
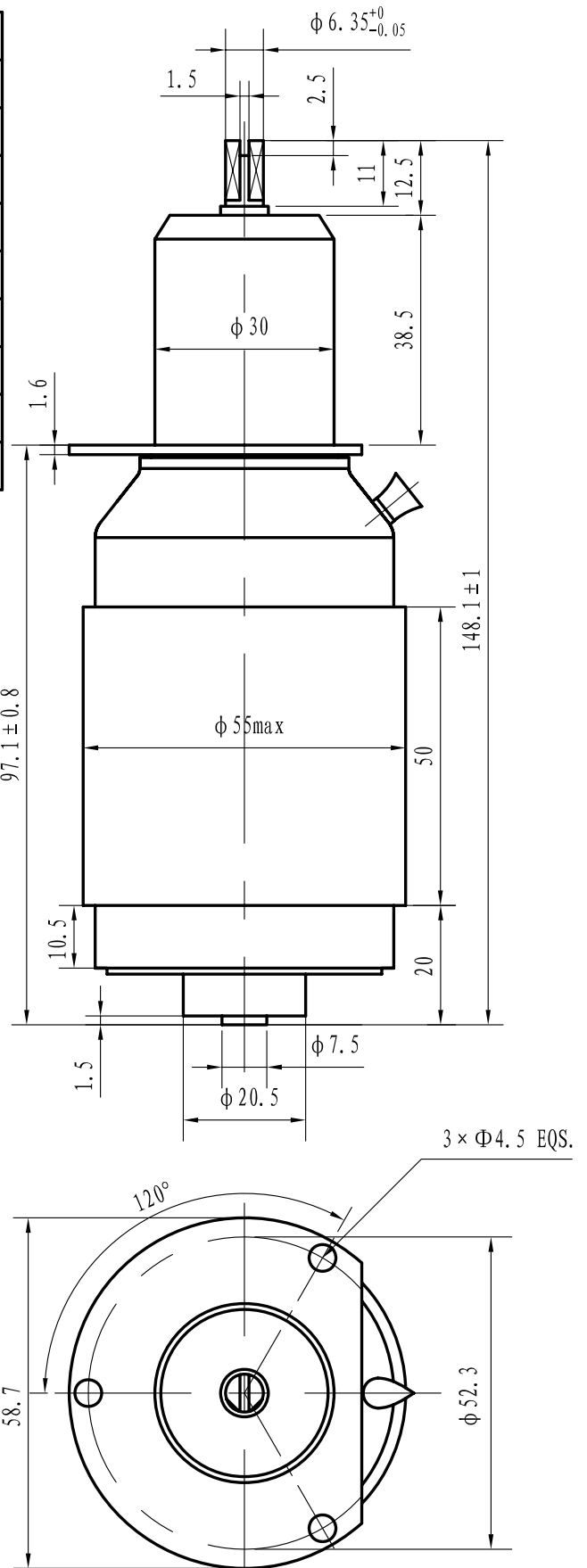
Data-Sheet-Variable Capacitor

CKTB500/3.5/57(I)



www.glvac.com

Specification	
Capacity $C_{max}$ (nominal)	500pF
Capacity $C_{min}$ (nominal)	5pF
Voltage (Peak Test $U_{pt}$ /Peak Working $U_{pw}$ )	5kV/3kV
Capacity tolerance (liner Range)	10%
Max. Current $I_{max}$ at 13.56MHz with	57Arms
Conduction Cooling	10W
Capacitance per turn	29.1pF/turn
Torque	$\leq 0.15Nm$
Net Weight	0.5kg



$I_{max}$  at ambient and 125 °C surface temp. for convection and conduction (10w) cooling

