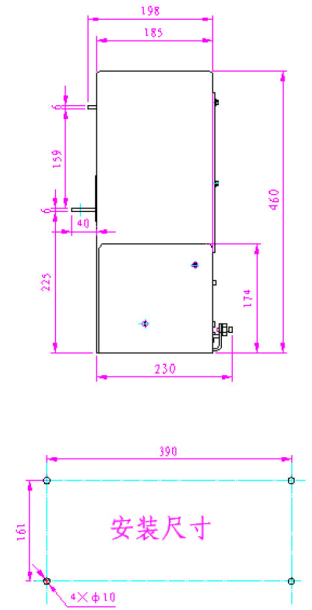
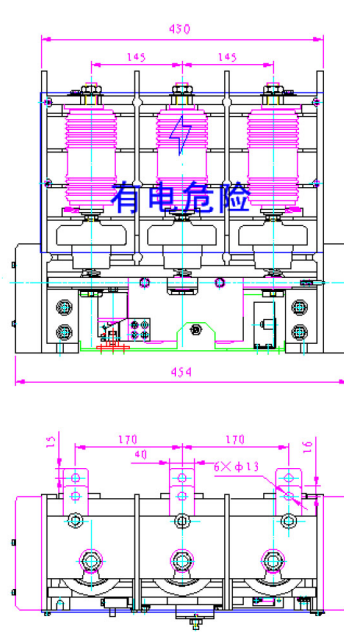


## Outline Drawing



JCZ5-400A/12kV-S AC Vacuum Contactor

(Mechanical Latching)

Technical Parameters		
Rated Voltage	kV	12
Rated Current	A	400
Rated Making Capacity	A/100 Times	4000
Rated Breaking Capacity	A/25 Times	4000
Limited Breaking Capacity	A/3 Times	4000
Rated short time withstand current (2S)	kA	4000
Rated peak withstand current	A	10000
Mechanical Life	Times	$5 \times 10^5$
Electrical Life	Times	300000
Weight	kg	30
Control Power Voltage	V (AC/DC)	110、220
Closing Power	W (transient)	930
Opening Power	W (transient)	300
Auxiliary Contact	3 pairs NO, 3 pairs NC	