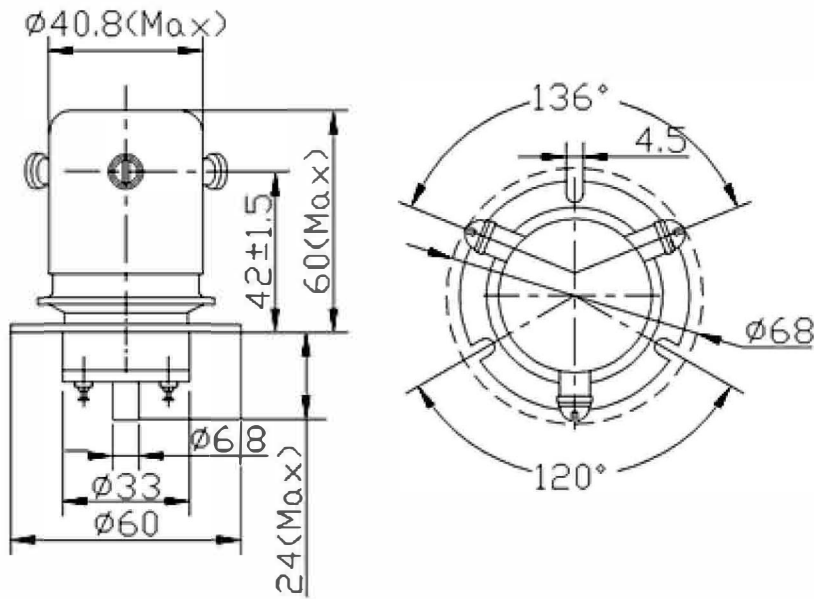


High Voltage Relays: GL9



Features

- Rugged, high current carry ceramic relay
- Vacuum as dielectric, low contact resistance



| Product Specification | | | |
|---|----------------------|------------|-----|
| Contact & Relay Ratings | Units | GL9 | |
| Contact Form | | C | |
| Contact Arrangement | | SPDT | |
| Test Voltage, (kV, Peak), Test Max., Contacts & to Base (15 μ A Leakage Max., dc or 60Hz) | KV Peak | 22 | |
| Rated Operating Voltage, (kV, Peak), Contacts & to Base (15 μ A Leakage Max.) | dc or 60Hz | KV Peak | 20 |
| | 2.5MHz | Kv Peak | 15 |
| | 16MHz | KV Peak | 13 |
| Continuous Current, Carry Max | 32MHz | KV Peak | 10 |
| | dc or 60Hz | Amps | 75 |
| | 2.5MHz | Amps | 35 |
| | 16MHz | Amps | 22 |
| | 32MHz | Amps | 17 |
| Coil Hi-Pot (V RMS, 60 Hz) | V | 500 | |
| Capacitance | Across Open Contacts | pF | 3 |
| | Contacts to Ground | pF | 3.5 |
| Resistance, Contact Max @ 1A, 28Vdc | ohms | 0.012 | |
| Operate Time, Max | ms | 30 | |
| Release Time, Max | ms | 8 | |
| Mechanical Life | Cycles | 1 million | |
| Weight | g | 300 | |
| Vibration, Sine (10-2000 Hz Peak) | G's | 10 | |
| Shock, 1/2 Sine 11ms (Peak) | G's | 50 | |
| Operating Temperature Ambient | $^\circ$ C | -55 ~ +125 | |

| Coil Ratings | | | |
|--|------|------|---|
| Nominal, Volts dc | 24 | 26.5 | - |
| Pick-up, Volts dc, Max | 16 | 16.5 | - |
| Drop-Out, Volts dc | 1-10 | 1-10 | - |
| Coil Resistance ($\Omega \pm 10\%$) | 190 | 190 | - |
| * Ratings listed are for 25 $^\circ$ C, sea level conditions | | | |

GL9 W F - 26.5Vdc

| | |
|--|--|
| High Voltage/Power Terminal W = Screw | |
| Mounting F = Flange | |
| Coil Voltage 25.6Vdc = 26.5 Vdc | |

* Order the relay with the coil voltage in the part number as shown above. The coil voltage will appear on the coil plate near the coil terminals rather than in the P/N on the relay.